



EARTH IS OUR FAMILY





NOTES:

Abstract:

EARTH FAMILY is a Life Space structure that presents a framework for organizing Earth Citizen gatherings under the EQORIA, United Earth, aimed at fostering harmonious and sustainable communities around the world. The purpose of these digital and/or physical gatherings is **to bring together Earth Citizens from diverse backgrounds and locations, creating opportunities for learning, sharing, collaboration, and joyful activities.**

The theme of "EARTH FAMILY" forms the foundation for these gatherings, emphasizing the interconnectedness of all beings and the importance of harmonious coexistence. This paper outlines the key elements of the gathering events, including the invitation process, activity selection, resource allocation, and the overall structure of the EARTH FAMILY gathering system.



By implementing the proposed EARTH FAMILY framework, we can create inclusive, engaging, and transformative events that empower Earth citizens to actively participate in building a harmonious and sustainable world. Through joyful activities, learning opportunities, and collaborative ventures, these gatherings foster a sense of belonging and interconnectedness, inspiring participants to embrace EQORIA principles and contribute to the well-being of Earth and all its inhabitants.

TABLE OF CONTENTS

Abstract:.....	2
TABLE OF CONTENTS.....	3
Chapter 1: Introduction.....	7
1.1 Background.....	7
1.2 Objectives of the EARTH FAMILY Gathering Events.....	7
1.3 Significance of Earth as Our Family Theme.....	8
Chapter 2: The EARTH FAMILY Gathering Framework.....	9
2.1 Designing the EARTH FAMILY Gathering System.....	9
2.2 Invitation Process.....	9
2.3 Activity Selection.....	9
2.4 Resource Allocation.....	9
2.5 Logistics and Event Management.....	10
2.6 Harmonious Adventures and Experiences.....	10
2.7 Impact Measurement and Evaluation.....	10
Chapter 3: Implementation EARTH FAMILY gatherings.....	12
3.1 Case Studies.....	12
3.1.1 Case Study 1: Harmony in the Mountains.....	12
3.1.2 Case Study 2: Urban Revitalization and Creativity.....	12
3.1.3 Case Study 3: Youth Empowerment and Education.....	13
3.2 Testimonials and Participant Feedback.....	13
3.3 Quantitative Data and Impact Evaluation.....	13
3.4 Lessons Learned and Future Directions.....	13
Chapter 4: The Future of EARTH FAMILY gatherings: Scaling Up and Global Impact.....	14
4.1 Scaling Up EARTH FAMILY gatherings.....	14
4.2 Global Impact and EQORIA Earth Constitution.....	14
4.3 EQORIA as a Catalyst for Positive Change.....	15
4.4 Challenges and Opportunities.....	15
4.5 Vision for the Future.....	15
Chapter 5: Empowering Earth Citizens with EQORIA Citizen Academy.....	16
5.1 Introduction to EQORIA Citizen Academy.....	16
5.2 EQORIA Citizen Academy Curriculum.....	16
5.3 Maximizing Love at EQORIA Citizen Academy.....	16
5.4 Integrating EARTH FAMILY gatherings into Citizen Academy.....	17

5.5 Empowerment and Transformation through Action Items.....	17
5.6 Measuring Impact and Continuous Learning.....	17
Chapter 6: Collaboration and Stakeholder Engagement.....	18
6.1 Introduction to Collaboration and Stakeholder Engagement.....	18
6.2 Collaborative Partnerships with Governments.....	18
6.3 Engagement with Educational Institutions.....	18
6.4 Collaboration with NGOs and Civil Society Organizations.....	19
6.5 Engagement with Businesses and Corporations.....	19
6.6 Collaboration with Local Communities.....	19
6.7 Monitoring, Evaluation, and Learning from Collaborative Efforts.....	19
Chapter 7: Scaling EQORIA Citizen Academy and Gatherings.....	20
7.1 Introduction to Scaling EQORIA Initiatives.....	20
7.2 Identifying Key Scaling Steps.....	20
7.3 Strengthening Program Design.....	21
7.4 Developing a Scalable Infrastructure.....	21
7.5 Forging Strategic Partnerships.....	21
7.6 Allocating Resources Effectively.....	21
7.7 Engaging and Empowering Local Communities.....	22
7.8 Monitoring, Evaluation, and Continuous Improvement.....	22
Chapter 8: Scaling Event Size and Population-based Multiplicity.....	23
8.1 Introduction to Event Size and Population-based Multiplicity.....	23
8.2 Scaling Event Size.....	23
8.3 Population-based Multiplicity Process.....	23
8.4 Implementing the Population-based Multiplicity Process.....	23
8.5 Logistics and Resource Planning.....	24
8.6 Ensuring Harmonious and Inclusive Gatherings.....	24
8.7 Evaluating and Iterating the Process.....	24
Chapter 9: Empowering Local and Regional Talents and Resources.....	25
9.1 Introduction to Empowering Local and Regional Talents.....	25
9.2 Engaging Local Communities.....	25
9.3 Marketing and Communication Strategies.....	25
9.4 Talent Registration and Skill Development.....	26
9.5 Promoting Local Businesses.....	26
9.6 Fostering Collaboration and Knowledge Exchange.....	26
9.7 Monitoring and Evaluation.....	26
Chapter 10: Creating Sensory Experiences at EARTH FAMILY gatherings.....	28

10.1 Introduction to Sensory Experiences.....	28
10.2 Taste Experiences.....	28
10.3 Sound Experiences.....	28
10.4 Visual Experiences.....	29
10.5 Touch Experiences.....	29
10.6 Cultural Experiences.....	29
10.7 Integration of Technology.....	29
Chapter 11: Logistical Considerations and Collaborative Planning for EARTH FAMILY.....	31
11.1 Introduction.....	31
11.2 Venue Selection.....	31
11.3 Event Infrastructure.....	31
11.4 Participant Registration.....	32
11.5 Marketing and Communication.....	32
11.6 Collaboration with Local Communities.....	32
11.7 Conclusion.....	33
Chapter 12: Evaluation and Continuous Improvement of EARTH FAMILY gatherings.....	33
12.1 Introduction.....	33
12.2 Evaluation Framework.....	33
12.3 Feedback Mechanisms.....	34
12.4 Data Analysis and Insights.....	34
12.5 Continuous Improvement Process.....	34
12.6 Conclusion.....	35
Chapter 13: Sustainable Practices and Environmental Stewardship with EARTH FAMILY.....	36
13.1 Introduction.....	36
13.2 Eco-Friendly Infrastructure.....	36
13.3 Waste Management.....	36
13.4 Renewable Energy.....	37
13.5 Local Sourcing and Sustainable Food.....	37
13.6 Education for Sustainable Living.....	37
13.7 Conclusion.....	37
Chapter 14: Challenges and Mitigation Strategies for EARTH FAMILY gatherings.....	38
14.1 Introduction.....	38
14.2 Logistical Challenges.....	38
14.3 Financial Considerations.....	39
14.4 Community Engagement.....	39
14.5 Participant Satisfaction.....	39

14.6 Evaluation and Continuous Improvement.....	40
14.7 Conclusion.....	40
Chapter 15: Conclusion and Future Directions.....	41
15.1 Summary of Key Findings.....	41
15.2 Potential Impact of EARTH FAMILY gatherings.....	41
15.3 The Importance of Collective Action.....	42
15.4 Future Directions.....	42
15.5 Conclusion.....	43

Chapter 1: Introduction

1.1 Background

In our rapidly changing world, the need for harmonious and sustainable communities has become increasingly evident. EQORIA, a visionary initiative, aims to create a global network of Earth citizens who embrace the principles of optimal multiplicity, action, and time. By fostering a sense of interconnectedness and promoting conscious living, EQORIA seeks to empower individuals to become active participants in creating a harmonious future for our planet.

1.2 Objectives of the EARTH FAMILY Gathering Events

The primary objective of this paper is to present a comprehensive framework for organizing Earth Family Gatherings under the EQORIA, United Earth initiative. These gatherings serve as catalysts for bringing together individuals from diverse backgrounds, cultures, and geographic locations to participate in transformative experiences. The key objectives are:

1. UNITY IN DIVERSITY:



Earth Family Gatherings bring together individuals from different backgrounds, cultures, and species. It is a celebration of our shared existence and a reminder of our interconnectedness. We believe that by embracing diversity, we can foster a deeper sense of understanding, empathy, and appreciation for all life forms.

2. RECOGNITIONS AND CELEBRATIONS:



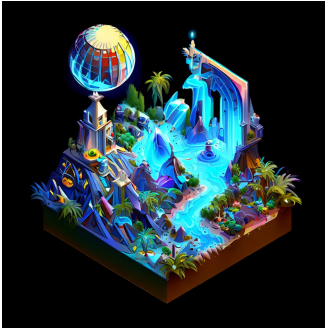
These gatherings provide opportunities for recognizing and celebrating the achievements, contributions, and milestones of Earth Citizens. Whether it's honoring environmental conservation efforts, acknowledging acts of kindness, or celebrating milestones in personal growth and consciousness, we come together to uplift and inspire one another.

3. LOVE AND COMPASSION:



Love is the guiding principle that underlies all our interactions at Earth Family Gatherings. Through acts of kindness, compassion, and support, we create a nurturing and inclusive environment where everyone feels valued, respected, and loved. It is through love that we foster deep connections and promote the well-being of all Earth Citizens.

4. ADVENTURES AND EXPLORATION:



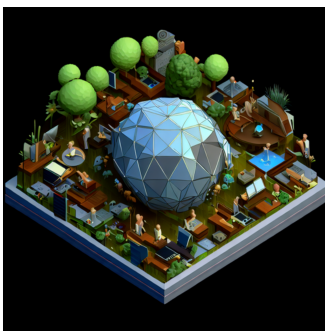
Earth Family Gatherings offer a range of adventurous and exploratory activities that allow Earth Citizens to connect with nature, engage in outdoor experiences, and explore the wonders of the Earth. From nature hikes and wildlife encounters to immersive eco-tours and nature-based workshops, these activities provide opportunities for connection, inspiration, and personal growth.

5. RELAXATION AND RENEWAL:



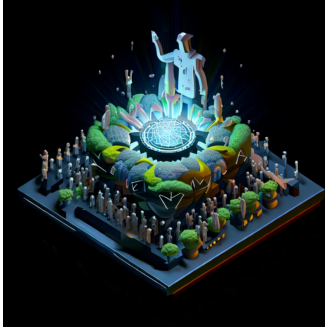
In the midst of the energetic activities, we also emphasize the importance of relaxation, rejuvenation, and self-care. Earth Family Gatherings offer spaces for meditation, mindfulness practices, healing sessions, and holistic wellness activities to promote physical, mental, and emotional well-being. It is through self-care that we nurture ourselves and are better able to contribute to the collective harmony of Earth.

6. COLLABORATIVE PROJECTS:



Earth Family Gatherings serve as a platform for Earth Citizens to engage in collaborative projects that benefit the Earth and its inhabitants. From community gardens and reforestation initiatives to sustainable development projects and environmental education campaigns, these projects allow us to actively contribute to the well-being of our planet and create a positive impact.

7. EARTH CITIZEN EMPOWERMENT:



Earth Citizen Empowerment is at the heart of our mission at Earth Family Gatherings. True ownerless empowerment comes not only from individual growth but also from collective support and collaboration. As an Earth Citizen, you have the power to make a difference, and we are here to provide you with the tools, resources, and community to help you unleash your full potential that is unique to every citizen.

8. EARTH TIME:



Experience the unique concept of EQORIA's Earth Time, where time becomes a valuable unit to exchange consciousness with Earth. Embrace responsible actions for Earth and fellow Earth Citizens while immersing yourself in the beautiful harmony of our planet.

1.3 Significance of Earth as Our Family Theme

At the heart of the EARTH FAMILY gatherings is the theme of "**EARTH IS OUR FAMILY.**" This theme encapsulates the fundamental principle that all beings, humans, and non-human alike, are interconnected and share a collective responsibility towards the well-being of our planet. By recognizing Earth as our family, the gatherings seek to foster a deep sense of respect, empathy, and love for all forms of life.

The "**EARTH IS OUR FAMILY**" theme serves as a guiding principle for the design, activities, and ethos of the EARTH FAMILY gatherings. It inspires participants to transcend boundaries, embrace diversity, and work together towards a common goal of creating a harmonious and sustainable world.

In the subsequent chapters of this paper, we will delve into the practical aspects of organizing and executing EARTH FAMILY gathering events. We will explore the design of the EARTH FAMILY gathering system, including the invitation process, activity selection, resource allocation, and the overall logistics of the events. Furthermore, we will examine the impact of these gatherings, share success stories, and highlight the future directions and expansion plans for the EQORIA initiative.

Through the implementation of the EARTH FAMILY gathering framework, we aim to create a transformative space where individuals can connect, learn, collaborate, and celebrate their shared journey as Earth citizens. By embracing the principles of optimal multiplicity, action, and time, we can pave the way towards a prosperous and harmonious future for all beings on our beloved planet.

Chapter 2: The EARTH FAMILY Gathering Framework

2.1 Designing the EARTH FAMILY Gathering System

The success of the EARTH FAMILY gathering events relies on a well-designed and efficient system that can seamlessly connect and engage participants from around the world. In this chapter, we will explore the key elements of the EARTH FAMILY gathering framework and discuss the processes involved in organizing and executing these transformative events.

2.2 Invitation Process

One of the foundational aspects of the EARTH FAMILY gathering framework is the invitation process. The system utilizes various channels and methods to invite individuals to participate in the gatherings. Local community leaders, social media platforms, online forums, and word-of-mouth recommendations are some of the avenues through which potential participants are reached. The invitation process aims to create an inclusive and diverse gathering, ensuring representation from different cultures, backgrounds, and age groups.

2.3 Activity Selection

The EARTH FAMILY gathering events offer a wide range of activities for participants to choose from. These activities are carefully curated to align with the principles of optimal multiplicity, action, and time. Participants have the freedom to select activities that resonate with their interests, passions, and skills. The activities span various domains, including arts, sciences, sports, workshops, discussions, and nature-based experiences. This diverse selection allows participants to explore and engage in activities that promote personal growth, collaboration, and a deeper connection with the Earth and its inhabitants.

2.4 Resource Allocation

To ensure the smooth execution of the EARTH FAMILY gathering events, effective resource allocation is essential. The gathering system considers the availability of resources such as venues, materials, equipment, and facilitators. It employs a dynamic and transparent

parametric system that optimizes resource allocation based on participant preferences, geographical considerations, and logistical constraints. The goal is to maximize the utilization of resources while creating a balanced and harmonious experience for all participants.

2.5 Logistics and Event Management

The logistics and event management aspect of the EARTH FAMILY gathering framework involves careful planning and coordination of various operational aspects. This includes venue selection and preparation, transportation arrangements, accommodation options, catering services, and overall event flow. The system leverages technology and efficient communication channels to streamline the logistics and ensure a seamless experience for participants.

2.6 Harmonious Adventures and Experiences

Central to the EARTH FAMILY gathering events are the harmonious adventures and experiences that participants embark upon. These adventures are designed to foster personal growth, deepen connections, and promote a sense of unity among participants. From exploring pristine natural landscapes to engaging in transformative workshops and cultural exchanges, participants are immersed in experiences that nurture their consciousness, expand their perspectives, and inspire them to be agents of positive change.

2.7 Impact Measurement and Evaluation

Evaluating the impact of the EARTH FAMILY gathering events is crucial for assessing their effectiveness and identifying areas for improvement. The gathering system incorporates mechanisms for measuring participant satisfaction, personal growth, collaborative outcomes, and the long-term impact of the gatherings on individuals and communities. This feedback and evaluation process informs future iterations of the EARTH FAMILY gathering framework, ensuring its continuous evolution and refinement.

In the next chapter, we will delve into the implementation and outcomes of the EARTH FAMILY gathering events. We will examine case studies, testimonials, and quantitative data to shed light on the transformative power of these gatherings in fostering harmony, interconnectedness, and conscious living among participants.

Chapter 3: Implementation EARTH FAMILY gatherings

3.1 Case Studies

In this chapter, we will explore several case studies that showcase the implementation and outcomes of EARTH FAMILY gatherings. These case studies highlight the diverse range of gathering events that have taken place in different regions of the world and demonstrate the positive impact they have had on participants and communities.

3.1.1 Case Study 1: Harmony in the Mountains

This case study focuses on an EARTH FAMILY gathering event held in a remote mountainous region. Participants from various backgrounds and cultures came together to engage in activities that celebrated nature, sustainable living, and cultural exchange. Through workshops on permaculture, mindfulness practices, and indigenous wisdom, participants gained a deeper understanding of their interconnectedness with the Earth and each other. The event fostered a sense of harmony, respect for the environment, and a commitment to sustainable practices among participants, leading to the establishment of ongoing community initiatives after the gathering.

3.1.2 Case Study 2: Urban Revitalization and Creativity

This case study examines an EARTH FAMILY gathering event held in an urban setting with a focus on revitalizing neglected public spaces and promoting creative expression. Participants collaborated on art installations, urban gardening projects, and interactive performances that transformed urban landscapes into vibrant, inclusive spaces. The gathering sparked a renewed sense of community engagement, social cohesion, and artistic expression among participants. It also inspired local authorities and organizations to invest in urban revitalization initiatives, resulting in long-term positive changes in the urban environment.

3.1.3 Case Study 3: Youth Empowerment and Education

This case study explores an EARTH FAMILY gathering event centered around empowering young individuals and promoting educational opportunities. The gathering provided a platform for young participants to share their ideas, knowledge, and talents through workshops, mentoring programs, and skill-sharing sessions. Participants gained confidence, developed leadership skills, and expanded their networks, leading to the emergence of youth-led initiatives focused on sustainable development, social justice, and educational empowerment in their communities.

3.2 Testimonials and Participant Feedback

In addition to the case studies, we collected testimonials and feedback from participants of EARTH FAMILY gatherings. These testimonials provide firsthand accounts of the transformative experiences and positive outcomes of the gatherings. Participants express how the gatherings have deepened their connection with nature, expanded their consciousness, fostered meaningful connections with others, and inspired them to take action in their personal lives and communities.

3.3 Quantitative Data and Impact Evaluation

To further assess the outcomes of EARTH FAMILY gatherings, we conducted quantitative data analysis and impact evaluation. This involved measuring various indicators such as participant satisfaction, personal growth and well-being, community engagement, environmental impact, and social cohesion. The data analysis provides valuable insights into the effectiveness of the gathering events and helps inform future iterations and improvements of the EARTH FAMILY gathering framework.

3.4 Lessons Learned and Future Directions

Based on the implementation and outcomes of EARTH FAMILY gatherings, we have identified key lessons learned and recommendations for future directions. These insights highlight the importance of community engagement, inclusive participation, cultural sensitivity, and ongoing support for post-gathering initiatives. We also discuss the potential scalability and global reach of the EARTH FAMILY gathering framework, envisioning a

network of interconnected gatherings that promote harmony, consciousness, and sustainable living on a global scale.

In the final chapter, we will present a holistic synthesis of the EARTH FAMILY gathering framework, taking into account the scientific, philosophical, and practical dimensions. We will reflect on the broader implications of this framework for fostering a harmonious and sustainable future for humanity and the Earth.

Chapter 4: The Future of EARTH FAMILY gatherings:

Scaling Up and Global Impact

4.1 Scaling Up EARTH FAMILY gatherings

In this chapter, we explore the potential for scaling up EARTH FAMILY gatherings to create a global impact. We discuss strategies for expanding the reach and scope of these gatherings, ensuring their accessibility to diverse communities worldwide. We examine the role of technology and digital platforms in facilitating virtual and hybrid gatherings, enabling participants from different parts of the world to connect and collaborate. Additionally, we explore the possibilities of partnerships with organizations, governments, and institutions to support the scaling up of EARTH FAMILY gatherings and amplify their impact.

4.2 Global Impact and EQORIA Earth Constitution

EARTH FAMILY gatherings have the potential to contribute to the realization of a sustainable and harmonious world as envisioned by the EQORIA Earth Constitution. In this section, we discuss how EARTH FAMILY gatherings align with and support the principles and goals set forth in the EQORIA Earth Constitution. We emphasize the importance of promoting ecological balance, social justice, cultural diversity, and economic prosperity through the transformative power of collective consciousness and action. We highlight the role of EARTH FAMILY gatherings in fostering a sense of global citizenship and responsibility, encouraging individuals and communities to actively participate in creating a sustainable future for all.

4.3 EQORIA as a Catalyst for Positive Change

EARTH FAMILY gatherings go beyond being a one-time event; they serve as catalysts for long-term positive change in individuals, communities, and society. In this section, we delve into the ripple effects of EARTH FAMILY gatherings, exploring how the transformative experiences and connections made during these gatherings inspire participants to become agents of change in their respective spheres of influence. We discuss the emergence of community-led initiatives, sustainable projects, and advocacy efforts that arise as a result of EARTH FAMILY gatherings, illustrating their potential to create a positive and lasting impact on a larger scale.

4.4 Challenges and Opportunities

While EARTH FAMILY gatherings hold immense potential for global impact, they also face challenges that need to be addressed. In this section, we identify and discuss key challenges such as logistical coordination, cultural sensitivity, and the need for ongoing support and resources. We propose strategies and solutions to overcome these challenges, including capacity building, knowledge sharing, and collaborative partnerships. Furthermore, we highlight the opportunities presented by emerging technologies, global connectivity, and the growing awareness of the need for holistic approaches to sustainability, which can further enhance the reach and impact of EARTH FAMILY gatherings.

4.5 Vision for the Future

In the final section of this chapter, we present a vision for the future of EARTH FAMILY gatherings. We envision a world where EARTH FAMILY gatherings become a widespread phenomenon, with countless local, regional, and global events happening simultaneously, fostering a collective consciousness of harmony, interconnectedness, and sustainable living. We discuss the potential of EARTH FAMILY gatherings to catalyze a paradigm shift in human consciousness and inspire a global movement towards a more harmonious and regenerative relationship with the Earth. We emphasize the importance of continuous learning, adaptation, and collaboration in realizing this vision and invite individuals, organizations, and communities to join the journey towards a more equitable, conscious, and sustainable future.

Chapter 5: Empowering Earth Citizens with EQORIA Citizen Academy

5.1 Introduction to EQORIA Citizen Academy

In this chapter, we explore the role of EQORIA Citizen Academy in empowering Earth Citizens through education and skill development. We delve into the objectives, curriculum, and approach of the academy, highlighting its focus on EQORIA Citizenship, EQORIA Infrastructure, Citizen Self Empowerment, and other key areas. We discuss the significance of providing comprehensive education and training to Earth Citizens, equipping them with the knowledge, skills, and mindset necessary to actively participate in creating a harmonious and sustainable world.

5.2 EQORIA Citizen Academy Curriculum

In this section, we provide an overview of the curriculum offered by EQORIA Citizen Academy. We outline the core subjects and modules covered in the curriculum, emphasizing their alignment with the principles and values of EQORIA. We discuss the multidisciplinary nature of the curriculum, integrating various fields such as sustainability, ecology, social justice, systems thinking, and personal development. We highlight the experiential learning approach employed by the academy, which encourages Earth Citizens to actively engage in practical projects, community initiatives, and EARTH FAMILY gatherings to apply their knowledge and skills in real-world contexts.

5.3 Maximizing Love at EQORIA Citizen Academy

One of the key aspects of EQORIA Citizen Academy is its emphasis on cultivating love and compassion among Earth Citizens. In this section, we explore the concept of "Maximum Love" and its integration into the academy's curriculum. We discuss the significance of love as a driving force for positive change and its transformative potential in fostering harmonious relationships, environmental stewardship, and social cohesion. We outline the specific modules and action items designed to facilitate the development of love and

empathy within Earth Citizens, encouraging them to embody and share these qualities in their interactions with others and the planet.

5.4 Integrating EARTH FAMILY gatherings into Citizen Academy

EARTH FAMILY gatherings serve as an integral component of EQORIA Citizen Academy, providing Earth Citizens with practical opportunities to apply their knowledge and skills in a collective and dynamic setting. In this section, we explore the integration of EARTH FAMILY gatherings into the academy's curriculum. We discuss how EARTH FAMILY gatherings serve as experiential learning platforms, allowing Earth Citizens to engage in collaborative projects, community-building activities, and transformative experiences. We highlight the synergy between the teachings of the academy and the immersive learning environment provided by EARTH FAMILY gatherings, enabling Earth Citizens to deepen their understanding, connection, and commitment to the principles of EQORIA.

5.5 Empowerment and Transformation through Action Items

At EQORIA Citizen Academy, action items play a crucial role in empowering Earth Citizens to translate their learning into tangible actions. In this section, we discuss the concept of action items and their significance in fostering individual and collective empowerment. We explore how action items are designed to align with the principles and values of EQORIA, encouraging Earth Citizens to take practical steps towards creating positive change in their lives and communities. We provide examples of action items related to Maximum Love, EQORIA Infrastructure, and other key areas of focus, highlighting their potential impact and the role of EARTH FAMILY gatherings in executing these action items.

5.6 Measuring Impact and Continuous Learning

In the final section of this chapter, we discuss the importance of measuring the impact of EQORIA Citizen Academy and Gatherings. We explore evaluation methods and metrics that can be used to assess the effectiveness and outcomes of the educational programs and activities. We emphasize the value of continuous learning, feedback loops, and adaptive management in enhancing the quality and relevance of EQORIA Citizen Academy. We also highlight the importance of fostering a lifelong learning mindset among Earth Citizens,

encouraging them to continuously expand their knowledge, skills, and capacity for positive change.

In the next chapter, we will explore the potential for collaborative partnerships and engagement with various stakeholders to support and enhance the EQORIA Citizen Academy and Gatherings, amplifying their impact and reach.

Chapter 6: Collaboration and Stakeholder Engagement

6.1 Introduction to Collaboration and Stakeholder Engagement

In this chapter, we delve into the importance of collaboration and stakeholder engagement in the context of EQORIA Citizen Academy and Gatherings. We explore the value of forging partnerships with diverse stakeholders, including governments, educational institutions, NGOs, businesses, and local communities. We discuss how collaboration can foster synergies, resource-sharing, and collective action, ultimately amplifying the impact and reach of EQORIA initiatives.

6.2 Collaborative Partnerships with Governments

One key area of collaboration for EQORIA Citizen Academy and Gatherings is with governments at local, regional, and national levels. In this section, we examine the potential benefits and opportunities of partnering with government entities to integrate EQORIA principles and curriculum into formal education systems. We explore avenues for collaboration, such as joint initiatives, policy advocacy, and resource allocation, to promote the integration of EQORIA education within existing educational frameworks.

6.3 Engagement with Educational Institutions

Educational institutions play a pivotal role in shaping the minds and perspectives of future generations. In this section, we discuss the significance of collaborating with schools, colleges, and universities to incorporate EQORIA principles into their curricula. We explore the potential for establishing partnerships, providing training and resources, and fostering a

network of EQORIA-affiliated educational institutions. We highlight the importance of empowering educators with the necessary knowledge and tools to effectively deliver EQORIA-inspired education.

6.4 Collaboration with NGOs and Civil Society Organizations

NGOs and civil society organizations are instrumental in driving social and environmental change. In this section, we explore opportunities for collaboration with these entities to expand the reach and impact of EQORIA Citizen Academy and Gatherings. We discuss the potential for joint initiatives, community engagement projects, and knowledge-sharing platforms. We also explore avenues for leveraging the expertise and resources of NGOs to support the implementation and scaling of EQORIA initiatives.

6.5 Engagement with Businesses and Corporations

Businesses and corporations have the potential to be powerful agents of change. In this section, we examine the role of collaboration with private sector entities to advance the goals of EQORIA Citizen Academy and Gatherings. We discuss opportunities for corporate social responsibility (CSR) partnerships, sustainable business practices, and support for EQORIA initiatives through funding, resources, and expertise. We emphasize the importance of aligning with businesses that share EQORIA's values and principles.

6.6 Collaboration with Local Communities

Local communities are the foundation of any sustainable and harmonious society. In this section, we explore the significance of engaging and collaborating with local communities in the implementation of EQORIA Citizen Academy and Gatherings. We discuss the importance of participatory approaches, community involvement, and co-creation of initiatives. We highlight the potential for empowering communities to take ownership of EQORIA programs and activities, fostering a sense of collective responsibility and action.

6.7 Monitoring, Evaluation, and Learning from Collaborative Efforts

In the final section of this chapter, we discuss the importance of monitoring, evaluation, and learning from collaborative efforts. We explore strategies for measuring the impact and

effectiveness of collaborative partnerships, identifying areas of success, and areas for improvement. We emphasize the need for ongoing dialogue, feedback loops, and knowledge-sharing among stakeholders to continuously refine and enhance the implementation of EQORIA Citizen Academy and Gatherings.

In the next chapter, we will explore the scaling potential of EQORIA initiatives, examining strategies for expanding the reach and impact of EQORIA Citizen Academy and Gatherings on a global scale.

Chapter 7: Scaling EQORIA Citizen Academy and Gatherings

7.1 Introduction to Scaling EQORIA Initiatives

In this chapter, we delve into the strategies and considerations for scaling the EQORIA Citizen Academy and Gatherings on a global level. Scaling refers to the process of expanding the reach, impact, and sustainability of EQORIA initiatives to a broader audience. We explore the importance of scalability in achieving widespread adoption and maximizing the potential for positive change.

7.2 Identifying Key Scaling Steps

The first step in scaling EQORIA Citizen Academy and Gatherings is to identify the key actions and initiatives required to expand their reach. This involves conducting a comprehensive analysis of the existing program, assessing its strengths, weaknesses, opportunities, and threats. Based on this analysis, specific scaling steps can be identified, focusing on areas such as program design, infrastructure, partnerships, resource allocation, and stakeholder engagement.

7.3 Strengthening Program Design

To scale EQORIA Citizen Academy and Gatherings, it is essential to strengthen the program design. This includes refining the curriculum, incorporating feedback from participants, and adapting the content to suit different cultural contexts. The program should be designed to be modular and adaptable, allowing for customization based on local needs and preferences.

7.4 Developing a Scalable Infrastructure

A scalable infrastructure is crucial for the successful expansion of EQORIA initiatives. This involves developing an online platform or portal that can accommodate a growing number of participants and facilitate seamless communication, resource sharing, and collaboration. The infrastructure should be user-friendly, accessible across different devices, and capable of handling large volumes of data and interactions.

7.5 Forging Strategic Partnerships

Collaborating with strategic partners is essential for scaling EQORIA Citizen Academy and Gatherings. This includes partnering with governments, educational institutions, NGOs, businesses, and other stakeholders who share the vision and values of EQORIA. Strategic partnerships can provide access to additional resources, expertise, networks, and support, enabling the program to reach a broader audience and have a greater impact.

7.6 Allocating Resources Effectively

Scaling requires careful resource allocation to ensure that sufficient resources, including funding, human capital, and technology, are available to support the expanded initiatives. This involves identifying potential sources of funding, establishing transparent financial management systems, and ensuring that resources are allocated in alignment with the program's objectives and priorities.

7.7 Engaging and Empowering Local Communities

Engaging and empowering local communities is crucial for scaling EQORIA initiatives. This involves actively involving community members in the planning, implementation, and evaluation of the program. By empowering local communities to take ownership of the initiatives, a sense of ownership and collective responsibility can be fostered, leading to greater sustainability and long-term impact.

7.8 Monitoring, Evaluation, and Continuous Improvement

Monitoring and evaluation are integral to the scaling process. Regular assessment of the program's impact, effectiveness, and reach allows for course correction and continuous improvement. This involves collecting data, measuring key performance indicators, and soliciting feedback from participants and stakeholders. The insights gained from monitoring and evaluation efforts can inform decision-making and guide future scaling efforts.

In the next chapter, we will explore the potential challenges and strategies for overcoming them in the process of scaling EQORIA Citizen Academy and Gatherings.

Chapter 8: Scaling Event Size and Population-based

Multiplicity

8.1 Introduction to Event Size and Population-based Multiplicity

In this chapter, we focus on scaling the size of EARTH FAMILY gatherings and implementing a population-based multiplicity process. We recognize the importance of accommodating larger numbers of participants while ensuring a harmonious and inclusive environment. By employing a population-based multiplicity process, we aim to leverage the diversity and collective wisdom of different communities and regions.

8.2 Scaling Event Size

To accommodate a larger number of participants, it is crucial to scale the event size of EARTH FAMILY gatherings. The minimum event size of 1000 participants provides a threshold for creating a vibrant and dynamic atmosphere. However, it is essential to consider the logistical requirements, venue capacity, and resource allocation necessary to host larger gatherings. By incrementing the event size with a 10 multiplier, we can gradually expand the reach and impact of EARTH FAMILY gatherings.

8.3 Population-based Multiplicity Process

The population-based multiplicity process is designed to ensure inclusivity and representation from different communities and regions. By aligning the event size with the population size of a particular area, we aim to create a proportional participation model. This process allows for diverse perspectives, cultural exchange, and the inclusion of marginalized groups. Through a comprehensive analysis of population demographics, strategic planning can be implemented to facilitate the participation of a wide range of individuals.

8.4 Implementing the Population-based Multiplicity Process

Implementing the population-based multiplicity process requires a systematic approach. This involves conducting demographic research and analysis to understand the population

distribution within a specific geographic area. Based on the findings, event size targets can be set to ensure proportional representation. Outreach efforts can be tailored to engage individuals from various demographics, promoting inclusivity and diversity.

8.5 Logistics and Resource Planning

Scaling the event size and implementing the population-based multiplicity process necessitates careful logistics and resource planning. Considerations such as venue selection, accommodation, transportation, and infrastructure must be taken into account. Resource allocation should align with the increased event size to provide a seamless experience for participants. Collaborating with local authorities, organizations, and volunteers can help streamline logistics and optimize resource utilization.

8.6 Ensuring Harmonious and Inclusive Gatherings

As the event size expands, it is essential to maintain a harmonious and inclusive environment. Implementing codes of conduct, fostering a culture of respect and inclusivity, and providing adequate support and resources for participants are key elements in creating a positive gathering experience. Facilitating intercultural understanding, promoting dialogue, and encouraging collaboration contribute to the overall success and impact of EARTH FAMILY gatherings.

8.7 Evaluating and Iterating the Process

Regular evaluation and iteration of the event size and population-based multiplicity process are essential for continuous improvement. Gathering feedback from participants, organizers, and stakeholders allows for insights into the effectiveness and impact of the scaling efforts. Through ongoing evaluation, adjustments can be made to optimize the event size targets and further enhance the inclusivity and representation of EARTH FAMILY gatherings.

In the next chapter, we will explore the potential benefits and challenges associated with scaling event size and implementing a population-based multiplicity process in EARTH FAMILY gatherings.

Chapter 9: Empowering Local and Regional Talents and Resources

9.1 Introduction to Empowering Local and Regional Talents

EARTH FAMILY gatherings are not only opportunities for Earth Citizens to connect and learn but also serve as platforms to empower local and regional talents. By recognizing and leveraging the skills and resources available in different communities, we can foster a sense of ownership and active participation in creating a harmonious and prosperous society. This chapter focuses on the strategies and initiatives aimed at empowering local talents and utilizing regional resources.

9.2 Engaging Local Communities

Engaging local communities is a key aspect of empowering local talents and resources. EARTH FAMILY gatherings provide an avenue for individuals and businesses from the surrounding areas to showcase their skills, products, and services. By collaborating with local organizations, artisans, entrepreneurs, and artists, EQORIA can create opportunities for them to contribute to the event and gain exposure to a wider audience. This collaboration not only enriches the gathering experience but also supports the local economy and promotes cultural diversity.

9.3 Marketing and Communication Strategies

Effective marketing and communication strategies play a crucial role in empowering local talents and resources. EQORIA can leverage various channels such as social media, online platforms, and traditional marketing techniques to reach out to local communities. By highlighting the unique offerings and talents of the region, EQORIA can attract participants and create a sense of anticipation for the upcoming gathering. Clear and concise communication regarding registration, activity selection, and opportunities for involvement will ensure maximum participation from local talents and resources.

9.4 Talent Registration and Skill Development

EQORIA's website serves as a central hub for registration and skill development for Earth Citizens. Local talents can register their skills, expertise, and offerings on the platform, allowing participants to discover and engage with them. Additionally, EQORIA can provide skill development programs and workshops to enhance the capabilities of local talents, enabling them to contribute effectively to EARTH FAMILY gatherings. This focus on skill development not only benefits the individuals but also enriches the gathering experience for all participants.

9.5 Promoting Local Businesses

Empowering local talents also involves supporting and promoting local businesses. EQORIA can establish partnerships with local vendors, artisans, and sustainable enterprises to showcase their products and services during the gatherings. This promotes economic growth and sustainability within the region. Moreover, EQORIA can facilitate networking opportunities and collaboration among local businesses, fostering a supportive ecosystem that encourages entrepreneurship and innovation.

9.6 Fostering Collaboration and Knowledge Exchange

EARTH FAMILY gatherings provide a platform for collaboration and knowledge exchange among local talents, participants, and experts from various fields. By organizing workshops, seminars, and panel discussions, EQORIA can facilitate meaningful interactions and the sharing of ideas. This fosters a culture of learning and collaboration, empowering local talents to enhance their skills and expand their networks.

9.7 Monitoring and Evaluation

Monitoring and evaluating the impact of empowering local talents and utilizing regional resources is essential for continuous improvement. EQORIA can gather feedback from participants, local talents, and stakeholders to assess the effectiveness of the strategies implemented. This feedback can inform future initiatives and enable EQORIA to refine its approaches in empowering local talents and maximizing the utilization of regional resources.

In the next chapter, we will explore the potential benefits and challenges associated with empowering local and regional talents and resources in EARTH FAMILY gatherings and discuss strategies for overcoming these challenges.

Chapter 10: Creating Sensory Experiences at EARTH

FAMILY gatherings

10.1 Introduction to Sensory Experiences

EARTH FAMILY gatherings aim to provide holistic and immersive experiences for Earth Citizens. One of the key aspects of these gatherings is the focus on engaging and satisfying all human senses. In this chapter, we explore the importance of sensory experiences and how they contribute to the overall atmosphere and enjoyment of EARTH FAMILY gatherings. We delve into various sensory elements such as taste, sound, visuals, touch, and cultural experiences, and discuss strategies for incorporating them into the event.

10.2 Taste Experiences

The sense of taste is a powerful way to engage participants and create memorable experiences. EARTH FAMILY gatherings can feature a diverse range of natural and organic food, fruits, and drinks, showcasing the richness and variety of flavors from different regions. Local farmers, food artisans, and chefs can collaborate to offer tastings, cooking demonstrations, and interactive workshops where participants can learn about sustainable food practices and healthy eating habits.

10.3 Sound Experiences

Music and sound play a vital role in creating a vibrant and energetic atmosphere at EARTH FAMILY gatherings. Live performances by local musicians and artists can showcase a diverse range of musical genres, providing entertainment and cultural enrichment. Additionally, interactive music workshops and drum circles can engage participants and encourage them to explore their own musical talents. The careful selection of sound systems and acoustics can enhance the overall audio experience, ensuring optimal sound quality throughout the event.

10.4 Visual Experiences

Visual aesthetics contribute significantly to the ambiance and immersion of EARTH FAMILY gatherings. Art installations, light displays, and multimedia projections can transform the event space into a visually captivating environment. Local artists and creative professionals can be involved in the design and execution of these visual elements, incorporating their unique artistic styles and cultural influences. Interactive art stations and workshops can provide participants with opportunities to engage in hands-on artistic activities and express their creativity.

10.5 Touch Experiences

Engaging the sense of touch adds a tactile dimension to EARTH FAMILY gatherings. Workshops on traditional craftsmanship, pottery, weaving, and other tactile arts can offer participants a hands-on experience, allowing them to learn and create tangible objects. Additionally, wellness activities such as massages, yoga sessions, and sensory relaxation spaces can provide opportunities for participants to unwind, rejuvenate, and connect with their bodies and physical sensations.

10.6 Cultural Experiences

EARTH FAMILY gatherings celebrate cultural diversity and provide a platform for cross-cultural exchange. Cultural performances, traditional dances, and storytelling sessions can showcase the richness and beauty of different cultures. Participants can immerse themselves in cultural activities, try traditional costumes, and engage in dialogue with representatives from various cultural communities. This fosters a sense of appreciation, understanding, and unity among Earth Citizens.

10.7 Integration of Technology

Technology can enhance the sensory experiences at EARTH FAMILY gatherings. Virtual reality (VR) and augmented reality (AR) installations can transport participants to different environments and enable them to explore new worlds. Interactive displays and digital installations can engage participants through gamification and interactive storytelling. However, it is crucial to strike a balance between technology and the natural world, ensuring

that technology is used in a way that complements and enhances the overall sensory experiences.

In the next chapter, we will discuss the logistical considerations, planning process, and collaboration with local talent and resources to create immersive sensory experiences at EARTH FAMILY gatherings.

Chapter 11: Logistical Considerations and Collaborative

Planning for EARTH FAMILY

11.1 Introduction

In Chapter 11, we delve into the logistical considerations and collaborative planning required to successfully organize EARTH FAMILY gatherings. These events aim to bring together Earth Citizens, local talents, and resources in a harmonious and engaging environment. We explore key aspects such as venue selection, event infrastructure, participant registration, marketing and communication, and the importance of collaboration with local communities.

11.2 Venue Selection

Choosing the right venue is crucial for the success of EARTH FAMILY gatherings. The venue should be spacious enough to accommodate the desired event size, offer both indoor and outdoor spaces, and be easily accessible to participants. It should also align with the values of EQORIA, such as sustainability and eco-friendliness. Collaborating with local communities, event organizers can identify suitable venues that embrace the natural beauty of the surroundings while providing the necessary facilities and infrastructure.

11.3 Event Infrastructure

Creating a seamless and immersive experience requires careful planning of event infrastructure. This includes setting up stages, performance areas, exhibition spaces, interactive zones, and food and beverage stations. Collaboration with local vendors and service providers is essential to ensure the availability of necessary equipment, such as sound systems, lighting, seating arrangements, and restroom facilities. The design and layout of the event should prioritize the comfort and safety of participants, while also considering the aesthetic appeal and flow of the gathering.

11.4 Participant Registration

A smooth and efficient participant registration process is vital for EARTH FAMILY gatherings. The EQORIA website can serve as a centralized platform for participants to register for the event, select their desired activities, and provide necessary information. Collaboration with local event management teams and volunteers can facilitate on-site registration and provide assistance to participants. The registration process should prioritize inclusivity, accessibility, and transparency, ensuring that all Earth Citizens have an equal opportunity to attend and actively participate.

11.5 Marketing and Communication

Effective marketing and communication strategies are essential to generate awareness and attract participants to EARTH FAMILY gatherings. Collaboration with local media outlets, community organizations, and online platforms can help spread the word about the event. The EQORIA website can serve as a hub for event information, program schedules, and updates. Utilizing social media channels, email newsletters, and targeted advertising campaigns can further enhance outreach efforts. Clear and concise messaging should convey the values, purpose, and unique offerings of EARTH FAMILY gatherings, emphasizing the benefits of participation and fostering a sense of community.

11.6 Collaboration with Local Communities

EARTH FAMILY gatherings thrive on collaboration with local communities. Engaging with local artists, musicians, performers, and cultural organizations enriches the event with authentic and diverse expressions of talent. Collaborating with local businesses, farmers, and food artisans promotes economic sustainability and supports the local economy. Involving local volunteers and community groups fosters a sense of ownership and empowerment. By establishing strong partnerships and actively involving local communities in the planning and execution of EARTH FAMILY gatherings, a shared sense of purpose and unity can be cultivated.

11.7 Conclusion

Chapter 11 highlights the logistical considerations and collaborative planning required to organize successful EARTH FAMILY gatherings. From venue selection to participant registration, marketing, and collaboration with local communities, each aspect contributes to the overall success and impact of the gatherings. By paying attention to these details and fostering strong collaborations, EARTH FAMILY gatherings can create a transformative and harmonious experience for Earth Citizens, bringing them closer to the vision of EQORIA and a united Earth.

In the next chapter, we will explore the evaluation and continuous improvement process for EARTH FAMILY gatherings, ensuring that each event evolves and adapts to meet the changing needs and aspirations of Earth Citizens.

Chapter 12: Evaluation and Continuous Improvement of EARTH FAMILY gatherings

12.1 Introduction

In Chapter 12, we delve into the importance of evaluation and continuous improvement in the context of EARTH FAMILY gatherings. These events aim to create transformative and harmonious experiences for Earth Citizens, and it is essential to assess their effectiveness, gather feedback, and make necessary adjustments to enhance future gatherings. We explore evaluation methods, feedback mechanisms, data analysis, and the iterative process of continuous improvement.

12.2 Evaluation Framework

Developing a comprehensive evaluation framework is crucial to assess the impact and success of EARTH FAMILY gatherings. This framework should encompass both quantitative and qualitative measures, considering various aspects such as participant satisfaction, engagement levels, knowledge acquisition, skill development, and the overall experience. Collaboration with experienced evaluators and researchers can help design survey instruments, conduct interviews, and analyze data to derive meaningful insights. The

evaluation framework should align with the goals and values of EQORIA, focusing on holistic well-being, sustainability, and the empowerment of Earth Citizens.

12.3 Feedback Mechanisms

Establishing effective feedback mechanisms is vital for gathering insights and perspectives from participants. Feedback can be collected through online surveys, focus groups, suggestion boxes, and interactive sessions during the gatherings. The EQORIA website can serve as a central platform for participants to provide feedback and share their experiences. Collaboration with local volunteers and facilitators can facilitate real-time feedback collection and encourage open dialogue. It is important to create a safe and inclusive space where participants feel comfortable expressing their opinions and suggestions for improvement.

12.4 Data Analysis and Insights

Analyzing the collected data and deriving meaningful insights is key to understanding the strengths and areas for improvement of EARTH FAMILY gatherings. Collaboration with data analysts and researchers can help process and interpret the data, identifying patterns, trends, and correlations. Data analysis can provide valuable information about participant demographics, preferences, satisfaction levels, and the effectiveness of different activities and program elements. These insights can inform decision-making processes and guide future planning to optimize the impact and experience of EARTH FAMILY gatherings.

12.5 Continuous Improvement Process

The evaluation findings and insights should drive a continuous improvement process for EARTH FAMILY gatherings. Collaboration with a dedicated team responsible for gathering, analyzing, and synthesizing feedback is essential. Based on the evaluation results, adjustments can be made to various aspects such as program design, activity offerings, logistical arrangements, communication strategies, and community collaborations. Continuous improvement ensures that each subsequent gathering builds upon the successes and learns from the challenges, creating an evolving and enriching experience for Earth Citizens.

12.6 Conclusion

Chapter 12 highlights the significance of evaluation and continuous improvement in the context of EARTH FAMILY gatherings. By implementing a robust evaluation framework, establishing effective feedback mechanisms, analyzing data, and embracing a culture of continuous improvement, EARTH FAMILY gatherings can evolve and adapt to meet the changing needs and aspirations of Earth Citizens. This iterative process ensures that each gathering becomes more impactful, engaging, and aligned with the vision of EQORIA and a united Earth.

Chapter 13: Sustainable Practices and Environmental Stewardship with EARTH FAMILY

13.1 Introduction

Chapter 13 focuses on the importance of sustainable practices and environmental stewardship in EARTH FAMILY gatherings. These events strive to foster harmony with nature and promote a deep sense of responsibility towards the environment. We explore various aspects such as eco-friendly infrastructure, waste management, renewable energy, local sourcing, and education for sustainable living. Collaboration with environmental experts, sustainability consultants, and local communities is crucial in implementing these practices effectively.

13.2 Eco-Friendly Infrastructure

Creating eco-friendly infrastructure is essential to minimize the environmental impact of EARTH FAMILY gatherings. Collaboration with sustainable architecture firms and event planners can ensure that venues are designed with energy efficiency, natural ventilation, and renewable materials in mind. Incorporating green spaces, such as gardens and vertical plantings, enhances the aesthetic appeal and promotes biodiversity. Embracing sustainable building practices reduces the carbon footprint and sets an example for future events.

13.3 Waste Management

Implementing effective waste management practices is vital to minimize the environmental footprint of EARTH FAMILY gatherings. Collaboration with local waste management agencies and recycling centers can help establish recycling stations and educate participants about proper waste separation. Composting food waste and using biodegradable or reusable serving materials reduces the amount of landfill waste. By prioritizing waste reduction, recycling, and composting, EARTH FAMILY gatherings can be a model for sustainable event management.

13.4 Renewable Energy

Transitioning to renewable energy sources is an important step towards sustainability in EARTH FAMILY gatherings. Collaboration with renewable energy providers and experts can help integrate solar panels, wind turbines, and other renewable energy systems into the event infrastructure. Utilizing renewable energy for lighting, sound systems, and other power requirements reduces reliance on fossil fuels and minimizes greenhouse gas emissions. This showcases the feasibility and benefits of renewable energy adoption to Earth Citizens.

13.5 Local Sourcing and Sustainable Food

Collaboration with local farmers, food artisans, and sustainable food organizations promotes local sourcing and sustainable food practices at EARTH FAMILY gatherings. Emphasizing organic, locally grown produce and supporting small-scale farmers reduces the carbon footprint associated with food transportation and promotes healthier, nutrient-rich meals. Incorporating plant-based options and reducing meat consumption further contributes to sustainable food choices. Education about sustainable food systems and their impact on health and the environment can empower Earth Citizens to make conscious food choices.

13.6 Education for Sustainable Living

EARTH FAMILY gatherings serve as an ideal platform for educating Earth Citizens about sustainable living practices. Collaboration with environmental educators, workshops, and interactive sessions can provide valuable insights into topics such as ecological footprint, resource conservation, biodiversity, and climate change. Engaging participants in hands-on activities, such as sustainable gardening, upcycling workshops, and renewable energy demonstrations, fosters a deeper understanding and inspires practical action. Education for sustainable living equips Earth Citizens with the knowledge and tools to make sustainable choices beyond the gatherings.

13.7 Conclusion

Chapter 13 highlights the significance of sustainable practices and environmental stewardship in EARTH FAMILY gatherings. By embracing eco-friendly infrastructure, implementing effective waste management, transitioning to renewable energy, promoting

local sourcing and sustainable food, and providing education for sustainable living, EARTH FAMILY gatherings become a powerful catalyst for positive environmental change. Collaboration with experts, local communities, and participants ensures the successful implementation of these practices, fostering a harmonious relationship with nature and setting an example for a sustainable future.

In the next chapter, we will explore the potential challenges and mitigation strategies for EARTH FAMILY gatherings, addressing obstacles that may arise during the planning, execution, and post-event phases.

Chapter 14: Challenges and Mitigation Strategies for EARTH FAMILY gatherings

14.1 Introduction

Chapter 14 discusses the potential challenges that organizers may encounter during the planning, execution, and post-event phases of EARTH FAMILY gatherings. By anticipating these challenges and developing effective mitigation strategies, organizers can ensure the smooth and successful implementation of the gatherings. We explore various aspects such as logistical challenges, financial considerations, community engagement, and participant satisfaction, providing insights and recommendations to address these challenges.

14.2 Logistical Challenges

Organizing large-scale gatherings involves complex logistical considerations. Challenges may include securing suitable venues, coordinating transportation and accommodation for participants, managing crowd control and safety measures, and ensuring efficient flow of activities. Collaboration with local authorities, event management professionals, and experienced volunteers is crucial to address these logistical challenges. Establishing clear communication channels, developing comprehensive event plans, and conducting regular site visits can help mitigate potential issues and ensure a well-organized event.

14.3 Financial Considerations

Funding and financial sustainability are critical aspects of organizing EARTH FAMILY gatherings. Securing adequate financial resources to cover expenses such as venue rental, equipment, staff, marketing, and participant amenities can be a challenge. Collaboration with sponsors, partners, and donors who align with the values and vision of EQORIA is essential. Exploring crowdfunding platforms, grant opportunities, and innovative funding models can also provide additional financial support. Developing a transparent and accountable financial management system and tracking expenses diligently helps ensure financial sustainability and responsible resource allocation.

14.4 Community Engagement

Engaging and mobilizing local communities is integral to the success of EARTH FAMILY gatherings. Challenges may arise in fostering community participation, addressing cultural sensitivities, and ensuring equal representation and inclusivity. Collaborating with local community leaders, organizations, and volunteers builds trust and encourages active involvement. Conducting community consultations, workshops, and information sessions creates a platform for open dialogue and co-creation. By incorporating local traditions, cultural performances, and knowledge-sharing, EARTH FAMILY gatherings can become a celebration of diversity and unity.

14.5 Participant Satisfaction

Creating a positive and meaningful experience for participants is a key objective of EARTH FAMILY gatherings. Challenges may include managing diverse participant expectations, ensuring equal access to activities and resources, and addressing any concerns or conflicts that may arise. Establishing clear communication channels, providing comprehensive event information, and offering pre-event orientation sessions can help manage expectations and ensure a smooth participant experience. Regular feedback collection, prompt response to queries, and proactive problem-solving contribute to high participant satisfaction and a sense of community ownership.

14.6 Evaluation and Continuous Improvement

Evaluating the effectiveness of EARTH FAMILY gatherings and implementing continuous improvement strategies present their own set of challenges. These may include data collection and analysis, resource constraints, and integrating evaluation findings into future event planning. Collaboration with experienced evaluators, researchers, and data analysts is crucial to overcome these challenges. Prioritizing evaluation as an integral part of event management, allocating dedicated resources, and utilizing technology for streamlined data collection and analysis can support the evaluation process. Regular review of evaluation findings and iterative adjustments based on feedback contribute to the ongoing improvement of EARTH FAMILY gatherings.

14.7 Conclusion

Chapter 14 addresses the challenges that organizers may encounter when planning and implementing EARTH FAMILY gatherings and provides mitigation strategies to overcome them. By effectively managing logistical considerations, securing financial resources, engaging local communities, ensuring participant satisfaction, and embracing a culture of evaluation and continuous improvement, organizers can navigate these challenges and create transformative and harmonious gatherings. Collaboration, open communication, and adaptability are key to successfully overcoming challenges and achieving the vision of EARTH FAMILY gatherings.

In the final chapter, we conclude the paper by summarizing the key findings, highlighting the potential impact of EARTH FAMILY gatherings, and emphasizing the importance of collective action for a united Earth.

Chapter 15: Conclusion and Future Directions

15.1 Summary of Key Findings

In this paper, we have presented the concept of EARTH FAMILY gatherings as a transformative and harmonious platform for bringing together Earth Citizens from diverse backgrounds to foster unity, collaboration, and sustainable development. We have explored the foundational principles of EQORIA, including the Optimal Multiplicity Action Time (OMAT) model, which emphasizes the importance of optimal harmony, collective action, and the conscious utilization of time. By aligning with these principles, EARTH FAMILY gatherings aim to create a global network of connected individuals working towards the betterment of humanity and the planet.

Throughout the paper, we have discussed the various aspects and components of EARTH FAMILY gatherings. From the initial planning and organization to the implementation of activities and the engagement of participants, each stage plays a vital role in creating a transformative and impactful event. We have explored the importance of holistic analysis, community engagement, citizen education, and the provision of sense-based experiential activities to ensure the success and effectiveness of EARTH FAMILY gatherings.

15.2 Potential Impact of EARTH FAMILY gatherings

EARTH FAMILY gatherings have the potential to create a profound impact on both individual participants and the global community as a whole. By fostering a sense of interconnectedness, collaboration, and shared responsibility, these gatherings can inspire and empower Earth Citizens to actively contribute to the creation of a more sustainable and harmonious world. Through the exchange of knowledge, experiences, and resources, EARTH FAMILY gatherings can facilitate the emergence of innovative solutions to pressing global challenges, promoting social, economic, and environmental well-being.

Furthermore, EARTH FAMILY gatherings have the capacity to strengthen the sense of global citizenship and promote a deep appreciation for the interconnectedness of all life on Earth. By providing a platform for dialogue, cultural exchange, and the celebration of diversity, these gatherings can bridge cultural, geographical, and ideological divides, fostering a

sense of unity and shared humanity. This collective consciousness can drive positive change and shape a more inclusive and equitable global society.

15.3 The Importance of Collective Action

EARTH FAMILY gatherings emphasize the importance of collective action in addressing the complex challenges facing our planet. By bringing together individuals, communities, organizations, and governments, these gatherings provide a space for collaboration, cooperation, and the co-creation of solutions. The power of collective action lies in its ability to harness diverse perspectives, expertise, and resources towards a common purpose. EARTH FAMILY gatherings serve as a catalyst for collective action, inspiring Earth Citizens to take individual and collective responsibility for creating a sustainable and harmonious future.

15.4 Future Directions

As we look towards the future, it is essential to continuously evolve and improve the concept of EARTH FAMILY gatherings. This can be achieved through ongoing research, feedback collection, and collaboration with stakeholders from various fields.

Future directions for EARTH FAMILY gatherings include:

1. **Scaling and Global Expansion:** Continuously expanding the reach and impact of EARTH FAMILY gatherings by organizing events in different regions of the world and engaging a broader range of participants. This can be achieved through strategic partnerships, effective marketing, and the establishment of local chapters and networks.
2. **Technology and Innovation:** Leveraging advancements in technology to enhance the organization and experience of EARTH FAMILY gatherings. This includes utilizing digital platforms for registration, communication, and resource sharing, as well as incorporating emerging technologies such as virtual reality and artificial intelligence to create immersive and interactive event experiences.
3. **Research and Evaluation:** Conducting rigorous research and evaluation to measure the effectiveness and impact of EARTH FAMILY gatherings. This includes assessing participant satisfaction, tracking the implementation of action items, and evaluating

the long-term outcomes and sustainability of the gatherings. Research findings can inform the continuous improvement and refinement of EARTH FAMILY gatherings.

4. **Policy Advocacy and Partnerships:** Engaging with policymakers, international organizations, and other stakeholders to advocate for policies and initiatives that align with the principles of EARTH FAMILY gatherings. By forging partnerships with governments, NGOs, and businesses, EARTH FAMILY gatherings can leverage resources and influence to drive systemic change and policy reforms.

15.5 Conclusion

In conclusion, EARTH FAMILY gatherings represent a transformative and harmonious approach to fostering global unity, collaboration, and sustainable development. By aligning with the principles of Optimal Multiplicity Action Time (OMAT) and creating a platform for collective action and consciousness exchange, EARTH FAMILY gatherings have the potential to empower Earth Citizens, create positive social and environmental impact, and shape a more inclusive and sustainable future for all. With ongoing innovation, research, and collaboration, EARTH FAMILY gatherings can continue to evolve and inspire individuals and communities to work together towards a world of optimal harmony and well-being.